



Swatch Book



**Rainfed Organic Cotton, Handspun, Handwoven,
Natural Dyed, Manually Tailored**

**Womens wear | Menswear | Kidswear | Newborns
Masks | Towels | Veshti | Others**



TULA INDIA

www.tula.org.in
contact@tula.org.in
+91 8056163560



TULA fabrics are made from **Organic Desi Cotton** i.e. cotton grown without any chemicals and also uses only rainwater, hence saving a lot of ground water and energy.

This cotton is pre-processed to get **roving** (roving is thick bundle of fibres aligned in a single direction), which is then **handspun** by Amber Charkha to get yarns.



These yarns are starched to strengthen them and dyed with **natural colors** obtained from nature, i.e. flowers or seeds or leaves.

Before **hand weaving**, warp of **3000 yarns** are set with these beautiful yarns, manually. Depending upon the design, warp and weft are consciously selected by the weaver.



TULA INDIA

www.tula.org.in
contact@tula.org.in
+91 8056163560



KORA

Kora fabrics are woven with the cotton yarns in their natural colour. These are unbleached resulting in majestic off-white colour.



TK-1
Rs. 378/meter



TK-2(Double threaded)
Rs. 472/meter

**Rainfed Organic Desi Cotton | Handspun | Handwoven |
Naturally Dyed | Manually Tailored**



SP KORA

These fabrics are very special, as weavers imagination and creativity results in these interesting self patterns using kora yarns alone. A variety of checks and stripes are acheived using natural colour of cotton.



TKP-1
Rs. 420/meter



TKP-2
Rs. 420/meter



TKP-3
Rs. 420/meter



TKP-4
Rs. 420/meter



TKP-5
Rs. 420/meter

**Rainfed Organic Desi Cotton | Handspun | Handwoven |
Naturally Dyed | Manually Tailored**



PARTLY DYED

The subtle pastel colours are achieved by weaving kora yarns along the length of the fabric and naturally dyed yarns along the width of the fabric. Yarns are dyed with elements of nature like flowers, roots, seeds, turmeric, etc.



THC-1
Rs. 441/meter



THC-2
Rs. 441/meter



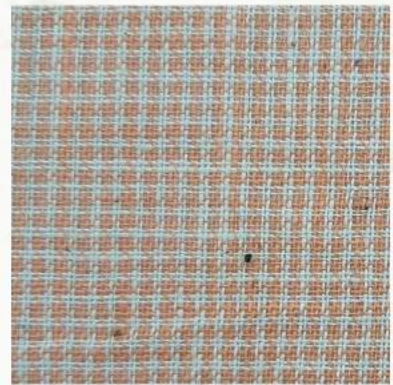
THC-3
Rs. 441/meter



THC-4
Rs. 441/meter



THC-5
Rs. 441/meter



THC-6
Rs. 441/meter

**Rainfed Organic Desi Cotton | Handspun | Handwoven |
Naturally Dyed | Manually Tailored**



TULA INDIA

www.tula.org.in
contact@tula.org.in
+91 8056163560



THC-7
Rs. 441/meter



THC-8
Rs. 441/meter



THC-9
Rs. 441/meter



THC-10
Rs. 441/meter



THC-11
Rs. 441/meter



THC-12
Rs. 441/meter



THC-13
Rs. 441/meter

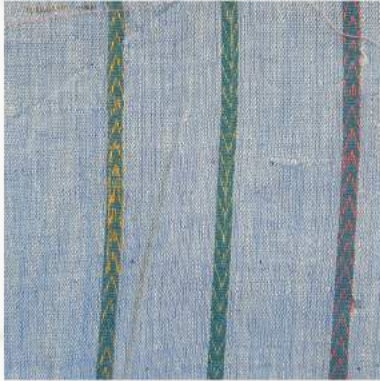


THC-14
Rs. 441/meter



THC-15
Rs. 441/meter

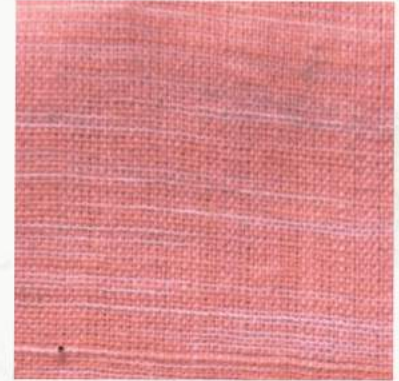
**Rainfed Organic Desi Cotton | Handspun | Handwoven |
Naturally Dyed | Manually Tailored**



THC-16
Rs. 441/meter



THC-17
Rs. 441/meter



THC-18
Rs. 441/meter



THC-19
Rs. 441/meter



THC-20
Rs. 441/meter



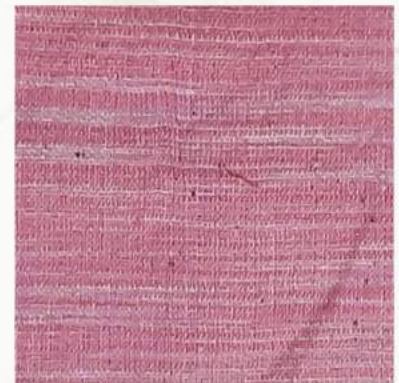
THC-21
Rs. 441/meter



THC-22
Rs. 441/meter



THC-23
Rs. 441/meter

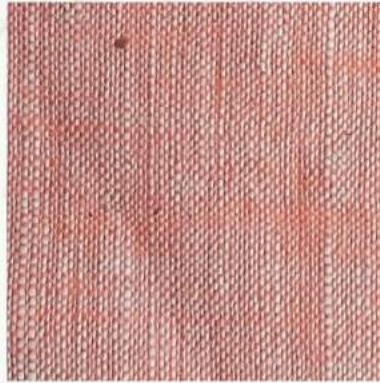


THC-24
Rs. 441/meter

Rainfed Organic Desi Cotton | Handspun | Handwoven |
Naturally Dyed | Manually Tailored



THC-25
Rs. 441/meter



THC-26
Rs. 441/meter



THC-27
Rs. 441/meter



THC-28
Rs. 441/meter

**Rainfed Organic Desi Cotton | Handspun | Handwoven |
Naturally Dyed | Manually Tailored**



TULA INDIA

www.tula.org.in
contact@tula.org.in
+91 8056163560



FULLY DYED

The bright colours are achieved by weaving naturally dyed yarns along both warp (length) and weft (width) of the fabric. Different natural elements yields us different colours, eg- green from wedelia, yellow from turmeric, etc.



TFC-1
Rs. 504/meter



TFC-2
Rs. 504/meter



TFC-3
Rs. 504/meter



TFC-4
Rs. 504/meter



TFC-5
Rs. 504/meter



TFC-6
Rs. 504/meter

**Rainfed Organic Desi Cotton | Handspun | Handwoven |
Naturally Dyed | Manually Tailored**



TULA INDIA

www.tula.org.in
contact@tula.org.in
+91 8056163560



TFC-7
Rs. 504/meter



TFC-8
Rs. 504/meter



TFC-9
Rs. 504/meter



TFC-10
Rs. 504/meter



TFC-11
Rs. 504/meter



TFC-12
Rs. 504/meter

**Rainfed Organic Desi Cotton | Handspun | Handwoven |
Naturally Dyed | Manually Tailored**

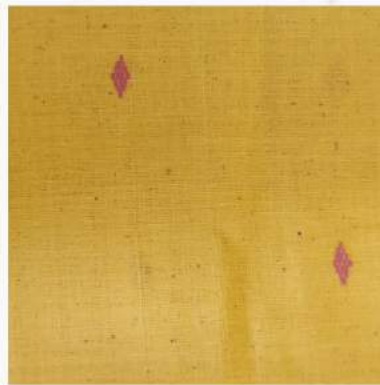


JAMDANI

Jamdani is a discontinuous extra weft technique of weaving. In Jamdani, intricate motifs are inlaid into the fabric by adding a denser thread to fine warp threads by hand. This weave is most time intensive, hence results in artistic motifs of geometry, florals, leaves, etc.



TJF-1
Rs. 735/meter



TJF-2
Rs. 735/meter



TJH-1
Rs. 672/meter



TJH-2
Rs. 672/meter



TJH-3
Rs. 672/meter



TJH-4
Rs. 672/meter

Rainfed Organic Desi Cotton | Handspun | Handwoven |
Naturally Dyed | Manually Tailored



TJH-5
Rs. 672/meter



TJH-6
Rs. 672/meter



TJH-7
Rs. 672/meter



TJH-8
Rs. 672/meter



TJH-9
Rs. 672/meter



TJH-10
Rs. 672/meter



TJH-11
Rs. 671/meter



TJH-12
Rs. 672/meter

**Rainfed Organic Desi Cotton | Handspun | Handwoven |
Naturally Dyed | Manually Tailored**



HAND BLOCK PRINT

Kalamkari is a painstaking artform where the designs are skillfully handpainted with a kalam/pen. These Kalamkari like prints are achieved by hand block printing of natural colors from Pedana, Andhra Pradesh.



TBP-1
Rs. 504/meter



TBP-2
Rs. 504/meter



TBP-3
Rs. 504/meter



TBP-4
Rs. 504/meter



TBP-5
Rs. 504/meter



TBP-6
Rs. 504/meter

**Rainfed Organic Desi Cotton | Handspun | Handwoven |
Naturally Dyed | Manually Tailored**



TIE & DYE

This is a special technique where the fabric is folded into desired pattern and tied with threads or rubber bands before dyeing. Hence, the dye is absorbed by other parts of the fabric, resulting in crumbled effect.



TTD-1
Rs. 504/meter



TTD-2
Rs. 504/meter



TTD-3
Rs. 504/meter

Wash care

Soak overnight in water with a handful of salt before using it. Avoid washing very frequently. Wash in cold water with mild detergents. Dry in shade.

**Rainfed Organic Desi Cotton | Handspun | Handwoven |
Naturally Dyed | Manually Tailored**



Thank You



for enhancing the livelihoods of

**Organic Farmers, Hand Spinners, Hand
Weavers, Natural Dyers, Tailors...**



TULA INDIA

www.tula.org.in
contact@tula.org.in
+91 8056163560